

Tavola 42. Disegni (scala 1:2). Anfore africane. Africana IID transizione con III (AA19-AA20); Africana IIIA (AA21-AA22); Africana IIIB (AA23-AA25)

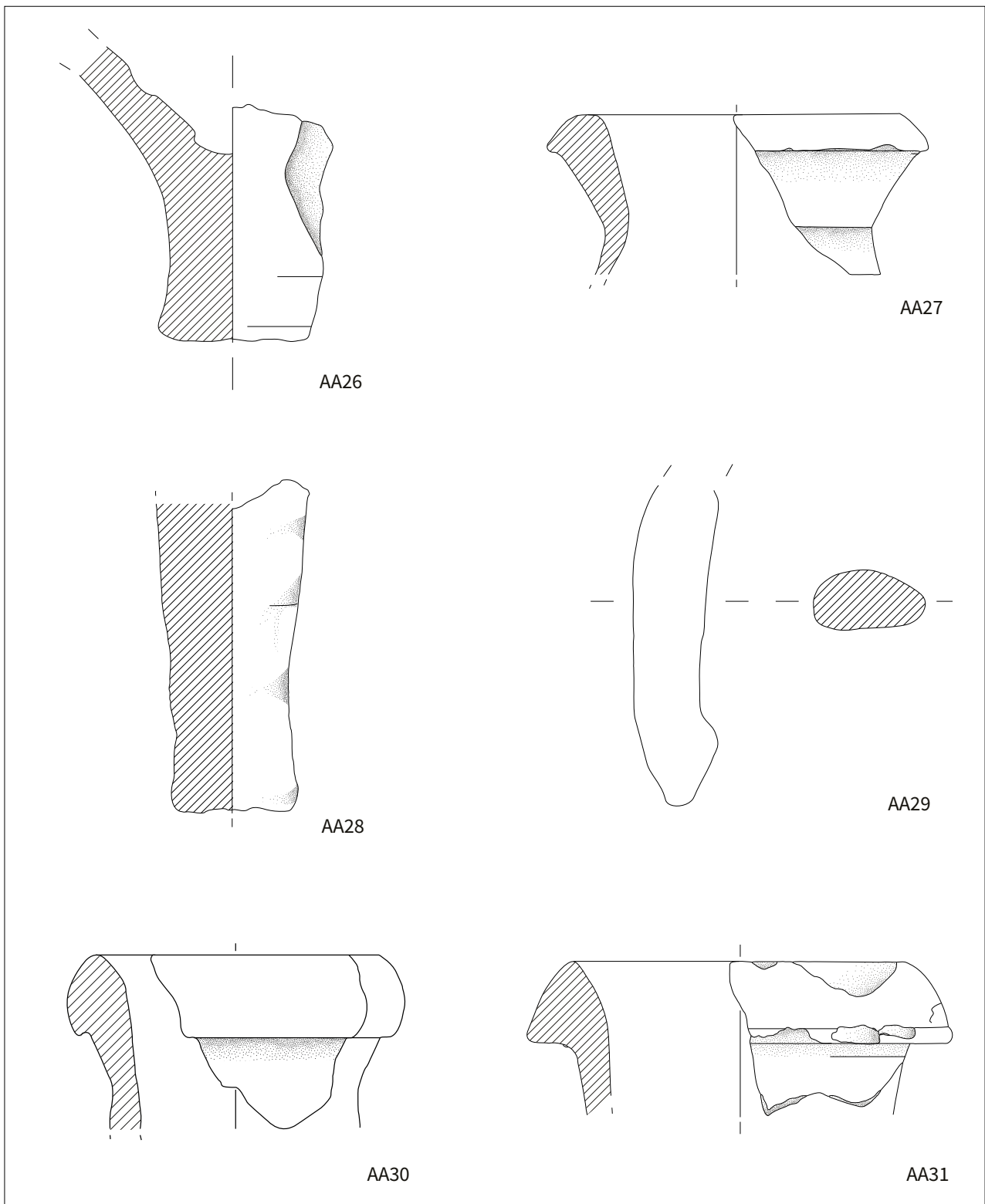


Tavola 43. Disegni (scala 1:2). Anfore africane. Africana IIIB (AA26); Africana IIIC (AA27-AA29); Spatheion I (AA30-AA31)

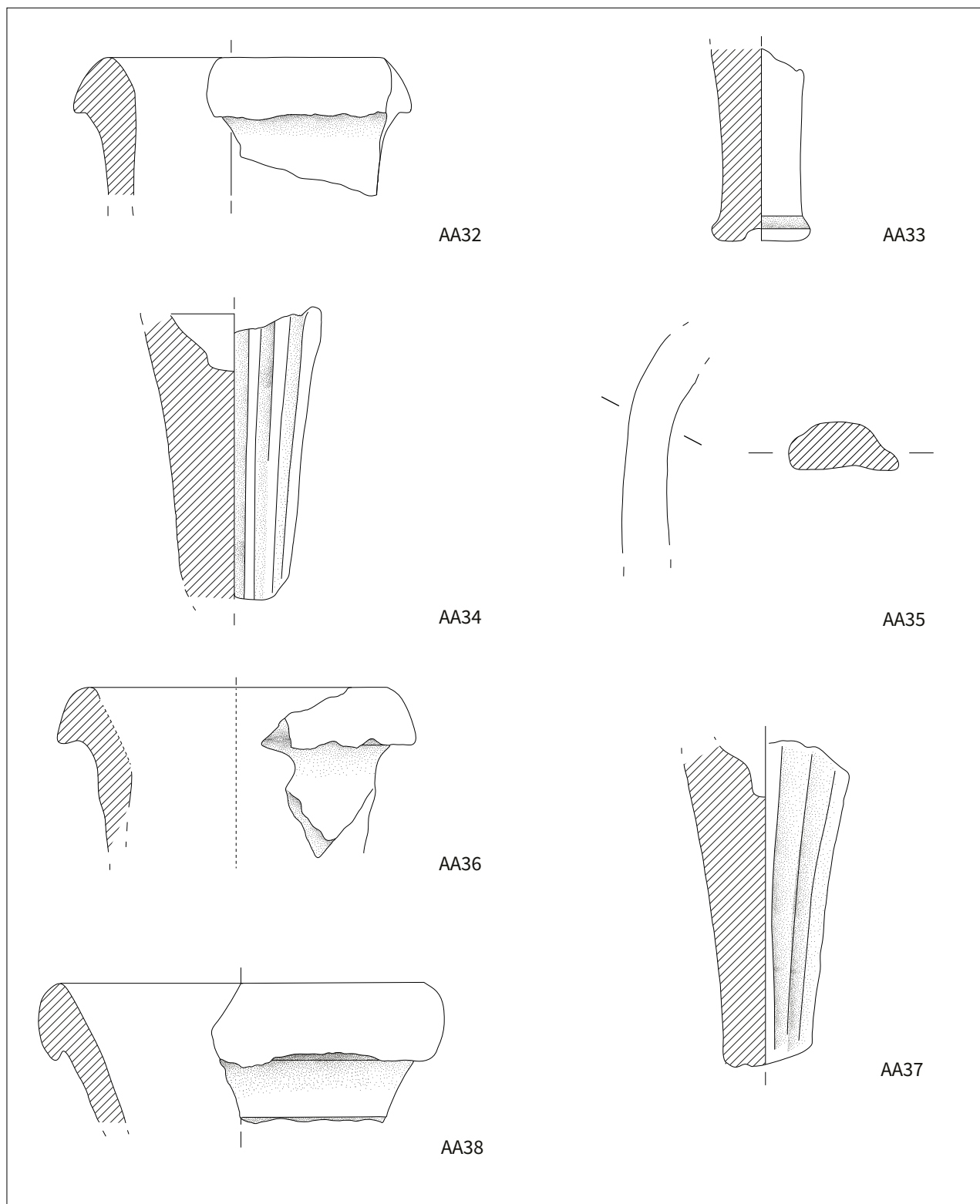


Tavola 44. Disegni (scala 1:2). Anfore africane. Spatheion I (AA33-AA35); Spatheion IA (AA36-AA3); Spatheion IA/B (AA37); Spatheion IB (AA38)

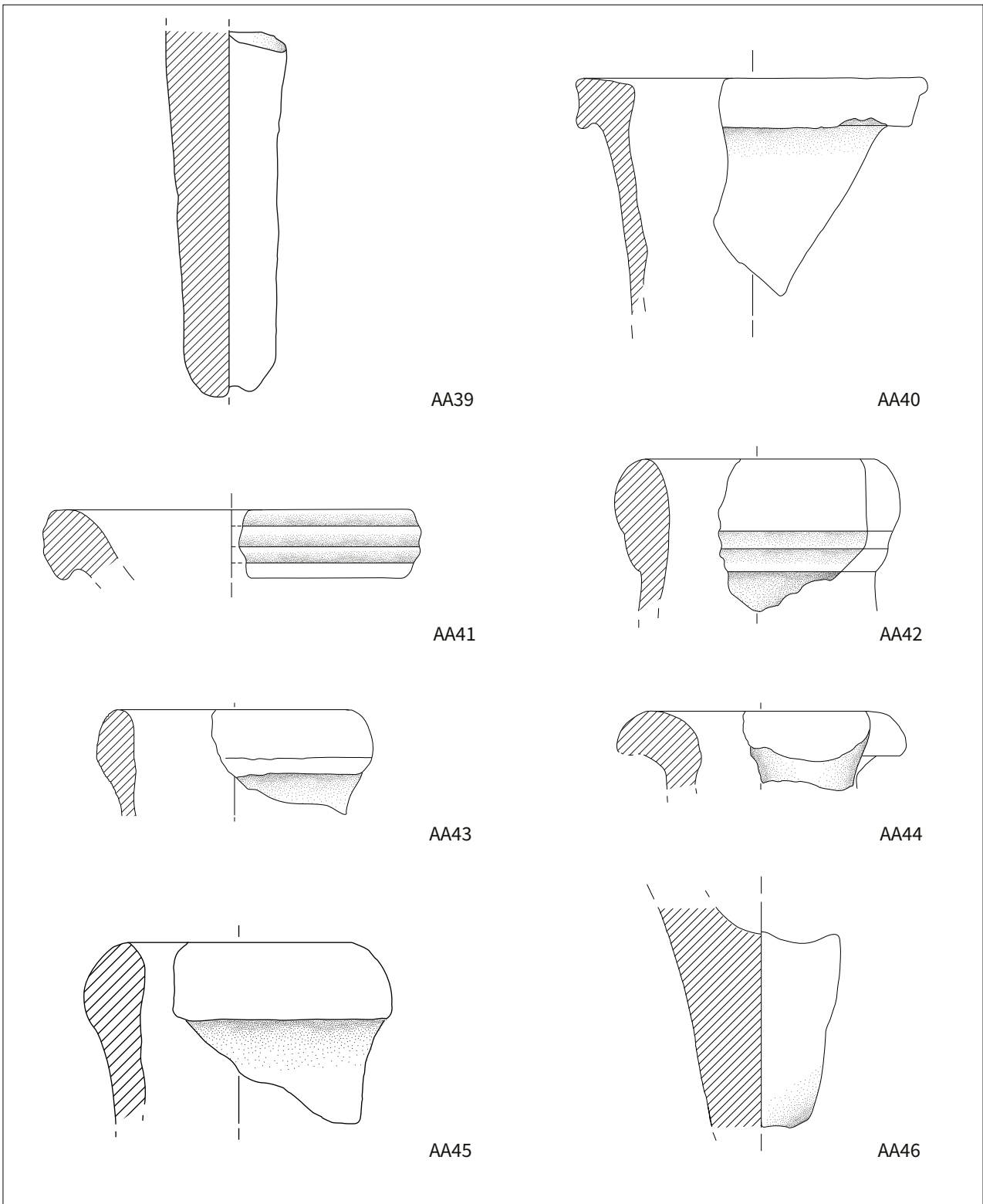


Tavola 45. Disegni (scala 1:2). Anfore africane. Spatheion IB/C (AA39); Spatheion IIA (AA40); Spatheion IIIA (AA41-AA42); Spatheion IIIC (AA43-AA45); Spatheion IIID (AA46)



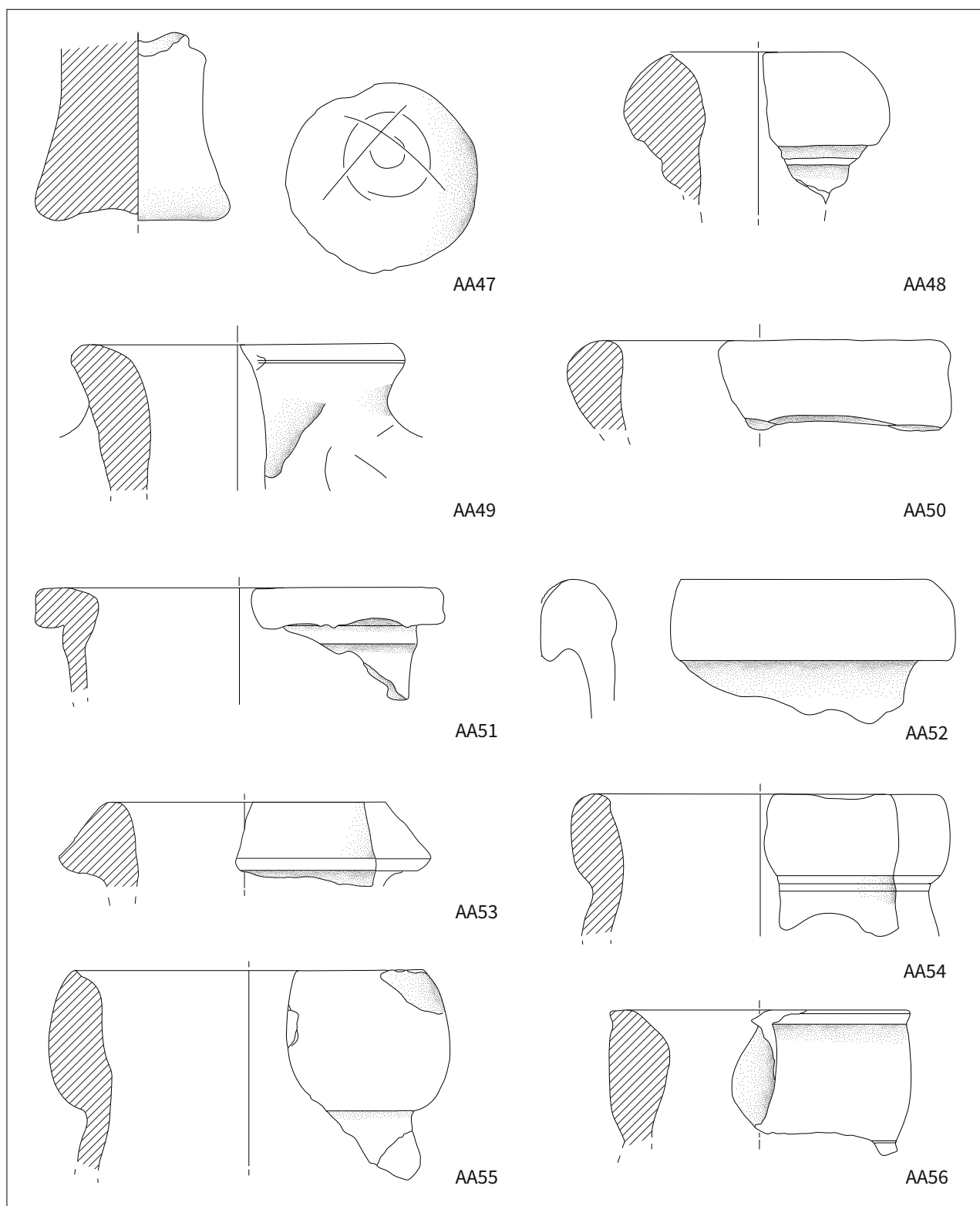


Tavola 46. Disegni (scala 1:2). Anfore africane. Spatheion IIID (AA47); Spatheion tardo (AA48); Keay 27 (AA49); Keay 36 (AA50); Keay 59 (AA51); Keay 35 (AA52); Keay 35B (AA53); Keay 57B (AA54); Keay 57 (AA55); Keay 56 (AA56)

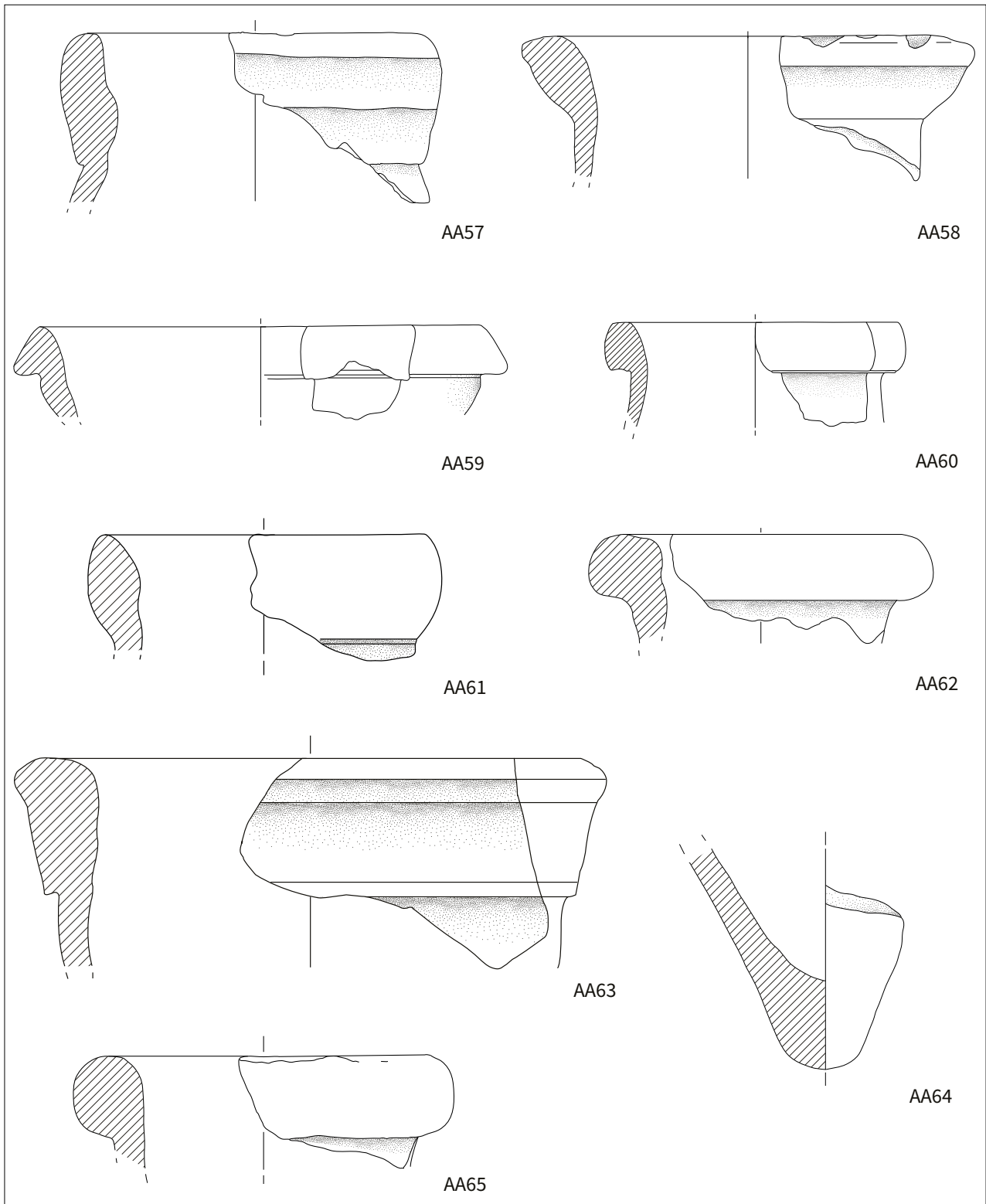


Tavola 47. Disegni (scala 1:2). Anfore africane. Keay 55 (AA57); Keay 62Q (AA58); Keay 62 (AA59-AA60); Keay 62 variante (AA61); Sidi Jdidi I (AA62); Tripolitana I (AA63-AA64); Dressel 2-4 (AA65)